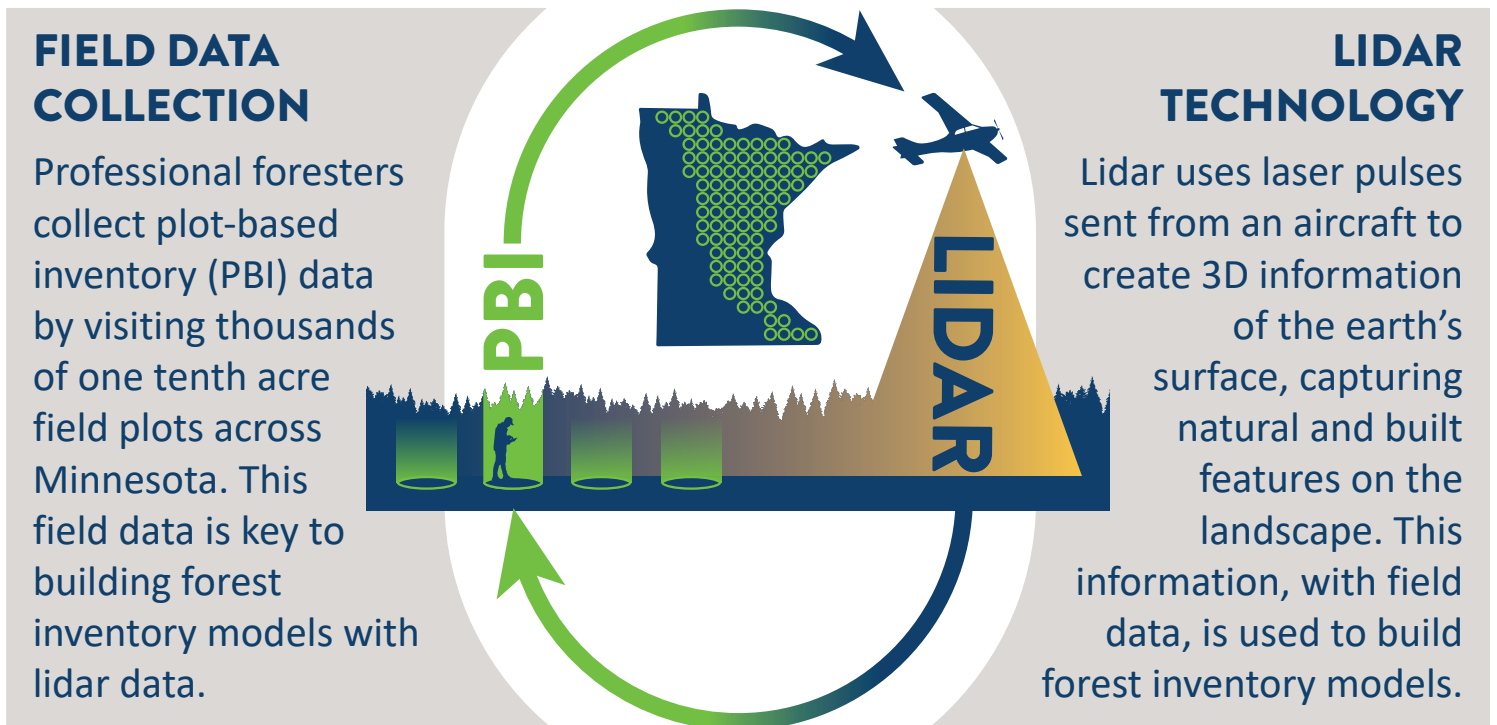


FOREST INVENTORY AND UNDERSTANDING YOUR WOODS

Forest inventory provides data on the type, number, and size of trees in forests. This information is important for forest management decision making. The Minnesota Department of Natural Resources (DNR) Resource Assessment Program (RA) uses lidar technology, combined with field plot data, to create precise and current forest inventory information of our dynamic forest landscape.



PBI FOR PRIVATE LAND OWNERS

Until now PBI has been collected primarily on public lands. Expanding PBI to private forest lands will provide landowners and managers valuable information needed to maintain the beauty, health and resilience of Minnesota's forested ecosystem. **We need help from private woodland owners!** New project areas are rolling out across the state. Forest landowners interested in participating are encouraged to check out our project area map and reach out to learn more!

